

Dunsandel

Historic Society

Step into Dunsandel's Past

A tour of Dunsandel's historic buildings and sites West of the Railway Line



1
2Km

After 1912, when a new parish consisting of Dunsandel and Brookside was formed, the manse was built. It was sold after 10 years, but regained in 1970 for a Sunday School.



2



4

Opening of the second hall in 1929. The hall incorporated the library, as did the first hall, and hosted many functions until the earthquakes.

The (Upper) Selwyn School was built on the Old South Road and ready for its 35 pupils in 1871, a year before Dunsandel was founded. By 1874 a second room was added. Since it was a distance from town, Dunsandel School took many of its pupils and it closed in 1936.

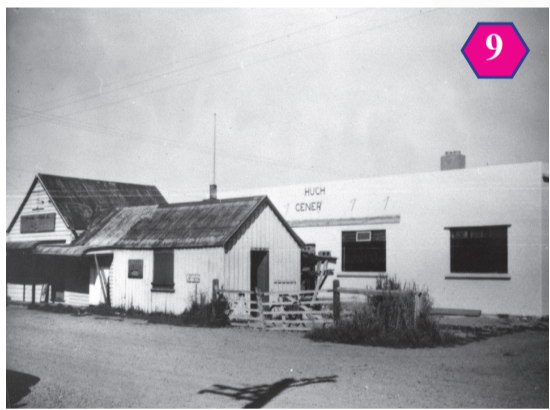
Presbyterian church services were held in homes, the hall and Selwyn School until the church was opened in 1907.



3

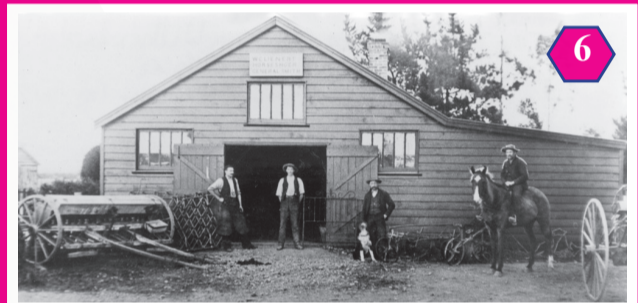
The church was demolished to make way for Trinity Church.

Hugh Brown set up a building business about 1880 and constructed the Presbyterian and Methodist churches among other buildings. A hardware business was established and later the old buildings were replaced. Drapery and groceries were also stocked. The site is now occupied by a veterinary clinic.



9

11



6

William Walker built the second blacksmith's shop in the area as one of the first buildings in the township itself.

The Methodist Church was opened in 1912 but after Trinity Church was ready, the church was used as a craft shop until 2017. The picture in the top left hand corner is the rose window.

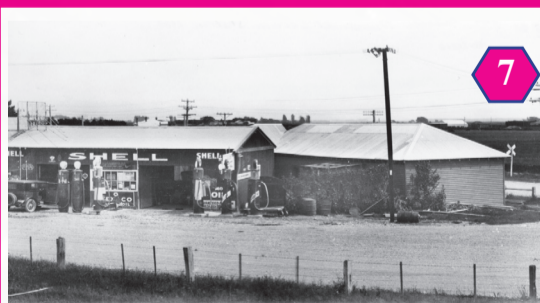


10



11

The goods shed was built on the west side of the line but most goods came from the east. The main road had to be moved west to allow room for access and keep the noise of vehicles from the horses. The goods shed was one of the first buildings in Dunsandel.



7

A service station, primitive by today's standards, was established in the 1920's by J Boyce from whom James Burgess took over in 1930. This was replaced by a modern garage run until comparatively recently by I & S McLean then Charles Taylor, which was in turn converted into the present shop.

The Dunsandel Store started life as a billiards room and bicycle shop but was later converted into a drapery shop and food bar.



8



5

An early store opened by Beria Robinson, later taken over by Jones & McCrenor, was burnt down. A saddler's shop run by Devereux was built and later occupied by James McKenzie and Luke Wilson. Bootmaking was also carried out in the shop.

Mike Noonan, 2018

Dunsandel is a quiet town and parking is generally easy however it is divided by a very busy main road and railline. **PLEASE TAKE CARE**. There is a toilet on the east side of the main road and footpaths line the streets.

We thank all those who donated or lent photographs that appear in this document and especially Julie Allan and her team who collected and rephotographed a large number of photos in 1979, and others such as the Ellesmere Camera Club. Also the dog cartoonists. We also thank Selwyn District Council for a grant to print this guide.

Dunsandel



Historic Society

Step into Dunsandel's Past

A tour of Dunsandel's historic buildings and sites East of the Railway Line



12

Second station built 1902 and closed in 1973. For most of the time up to 1953 the railway station was used as a postal centre.



Walls of cob were all that remained of the Wraight's cob cottage built on their land



17

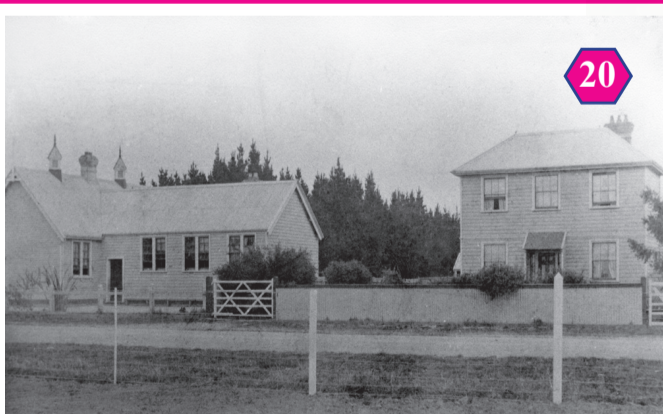
Occupied after most other cob cottages had been replaced by wooden framed buildings.

Services held in homes and the first hall until 1882 when church was opened on land donated by William Wraight.



19

The Anglican church was converted into a house after the congregation moved to Trinity Church.



20

The one roomed school opened in 1879 with 100 pupils. Two class rooms added in 1882 and building burnt down in 1936. School house served from 1879 to 1940.

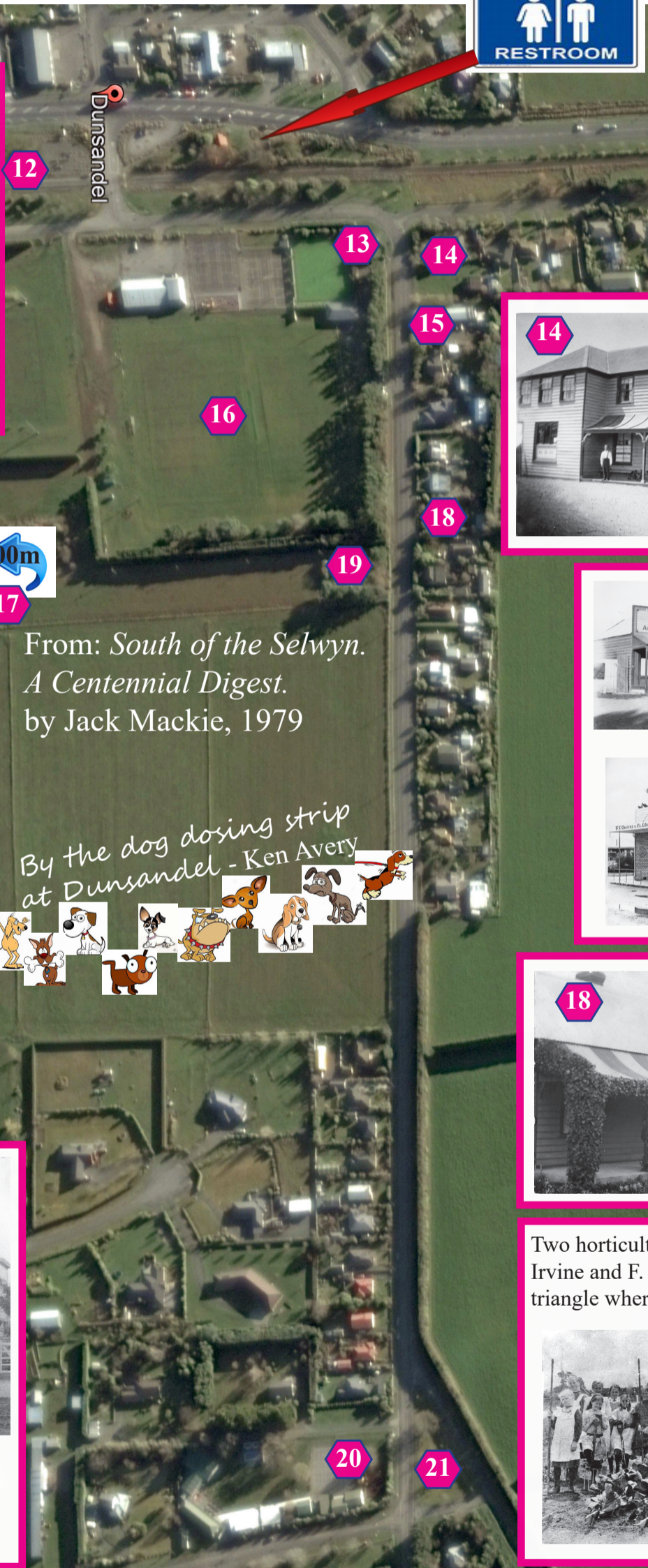


16



Cricket was one of the first organised sports played at Dunsandel. The team is in front of the gates of the pavilion.

A sports meeting was held in the domain annually on New Year's day.



From: *South of the Selwyn. A Centennial Digest.* by Jack Mackie, 1979

By the dog dosing strip at Dunsandel - Ken Avery



The Italian white marble statue of a soldier has been honouring the dead soldiers of Dunsandel since 1922.



13



14

Second hotel dragged with traction engine from Selwyn Town in 1895. The first hotel was one of the first buildings in town. New hotel on SH1 in 1955



15

A very early store run by John Henry until Samuel Sherrard took it over in the mid 1880s. Brick front piece added some years after Owers Bros bought it in 1915.



18

Houses, some flashier than others, were built to house the many notables. The Sheat family lived in this house briefly.

Two horticulturally-minded successive head teachers, T. Irvine and F. Smith, developed a garden in 1910, in the triangle where there is an oak tree today.



21

In 1927 the school received a prize for the garden but by the 1940s the fence was finally removed.